

ECO.next chair is the evolution of a great classic that mixes high performances to the absolute pleasure of refined and timeless italian design.

ECO.next has been designed to offer maximum anatomical comfort to the patient, complete ergonomics and perfect hygiene to the medical team.

As a result of the combination of different materials and technologies, the **ECO.next** chair matches comfort and high performances, giving a unique experience to the professional and to the patients.

The chair's structure is almost completely covered in integral polyurethane to assure the maximum strength, the compact base improves the functionality and the two lateral wings make the chair perfectly stable, the joystick pedal controls directly in a simple and efficient way the movements and allows to reach the programmed positions.

ECO.next

- Electromechanical lifting, lowering and tilting movements;
- Compensated backrest tilting, up to the horizontal position;
- Narrow and slim anatomical backrest for the maximum liberty of action of the professional;
- Multi-articulated anatomical headrest ELLE2 MOBILE for a patient's comfortable posture and for a perfect visibility during the treatment;
- Wrapping seamless upholstery in high quality leatherette fabric;
- Possible customization with different colors of polyurethane and leatherette fabric;
- Integrated utility box;
- Complete symmetry for right-handed or left-handed professional;
- Joystick control on the base for fast and efficient movements of the chair without using the hands, assuring a perfect hygiene;
- Security STOPS on the backrest, on the base and on the pantograph arm;
- Return to "zero" position automatic program;
- Rinse position automatic program;
- Possibility to program 3 different working position (OPTION);
- Possibility to equip the chair with one/two rotating armrests to improve the accessibility of the chair and to assure a natural support for the arms, allowing a relaxed position during the treatment (OPTION).



Narrow backrest

This backrest was studied to allow the doctor the closest approach to the patient during the treatment, also guaranteeing an excellent comfort to the patient.



Large anatomical backrest (OPTION)

Guarantees the maximum comfort, wrapping the patient's back in a pleasant relax.

Trendelenburg Movement (OPTION)

At 15°, with automatic compensation of the backrest for a correct blood flow during the treatment.



Rotation (OPTION)

Rotating device which allows the chair to rotate around the vertical axis by a lever under the seat.

Mobile foot control "Easy Touch" (OPTION)

Easy and functional foot control which provides different precise treatment positions and doctor's hands-free control.



Right and/or left armrest (OPTION)

Rotating armrests help the patient to get on/off the chair.

Infrared remote control (OPTION)

Manual control of the movements and set to reach programmed positions.

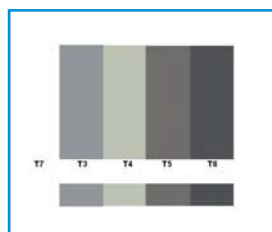


Unit/lamp attachment (OPTION)

Drilled body for fastening dental unit/lamp.

Central arm (OPTION)

Unit fixing and rotating arm for ambidextrous functionality.



Polyurethane colors

Possibility to choose between 5 different colors.

TECHNICAL FEATURES			
Maximum height	mm	Without rotation 780	With rotation 795
Minimum height	mm	Without rotation 380	With rotation 395
Backrest tilting angle	°	-15/+65	
Rotation angle	°	±30	
Width	mm	660	
Length (without headrest)	mm	1570	
Length (with headrest)	mm	2050	
Gross weight	Kg	170	
Net weight	Kg	140	
Maximum lifting capability (patient + unit)	Kg	135+75	
Classification		I	
Type		B	

STANDARD AND
OPTIONAL CHARACTERISTICS

- Standard
- Optional

		2009new	ECO19	ECO.next	Linda3	Sting
Headrests	ELLE FISSO	•			•	
	ELLE/ELLE2 MOBILE	•	•	•	•	•
	UNI/Light	•	•	•	•	•
Pillows	C95	•	•	•	•	•
	C2002	•	•	•	•	•
Backrest	Narrow	•	•	•		
	Large	•	•	•	•	•
	"T" shaped	•				
Armrest	Right armrest	•	•	•	•	•
	Left armrest	•	•	•	•	•
Programs	Return to "zero" program	•	•	•	•	•
	Rinse program	•	•	•	•	•
Unit connection	Double side drilled upper body	•	•	•	•	•
	Fixed central arm		•	•		
	Rotation	•	•	•	•	•
	Rotation with central arm	•	•	•		•
Function	Trendelenburg	•	•	•	•	•
	Knee-break legrest				•	
	Securities	•	•	•	•	•
	Small integrated utility box		•			
Control	Large integrated utility box	•		•		•
	Joystick			•	•	•
	Foot control on the base	•	•			
	Mobile foot control	•	•	•	•	
	Infrared remote control			•	•	•

HEADRESTS

Tecnodent manual Headrests are available in 4 different models: ELLE FISSO, ELLE/ELLE2 MOBILE, UNI and Light. Every headrest was made for meeting every operator's need.

ELLE/ELLE2. ELLE/ELLE2 FISSO has only the movement along its vertical axis. ELLE/ELLE2 MOBILE is an anatomical headrest, characterized by movement of inclination of the upper part (double articulation) for a correct cervical support.



ELLE/ELLE2



C95



C2002

Magnetic pillows. ELLE/ELLE2 type, both fix and mobile version, can be combined with magnetic pillow C95 or C2002. Either pillow can be applied directly on the backrest, for ensure a better comfort, independently of the patient's height.



UNI



Light

UNI and Light. The UNI and Light headrests are multi-articulated and allows positioning of the headrest along 3 axis.

TECNO DENT
ERGONOMIC INNOVATION